



Avonmore Primary School Meet the Teacher 2024'25

 **Fox**Federation



Overview of today's meeting

- 2024-2025 priorities
- SLT & The Teaching Team & Class Rep. Info.
- Rebuild Project Update
- KS/Phases updates
- School day, class timetable & curriculum
- Home learning expectations
- Behaviour Policy
- Children's Mental Health - West London Zones
- Enrichment
- Key dates



2024-2025 School priorities

Keep building on the success of Ofsted- we are ‘outstanding in all areas’

Develop approaches to Guided Reading in-line with the new Reading Framework.




Embed our music offer for all children (second year)

Planning for the rebuild and decant.

Fundraising to keep Avonmore as fantastic as possible.



The Leadership Team

Head of School	Ms Wittleton	
Deputy Heads of School	Mr Brown Ms Waddell	 
Assistant Headteachers	Ms Henman Mr Charlesworth Miss Mullins (Mat.)	 
EYFS Lead	Ms Driscoll	



Year 2 teaching team

Class Teacher



Ms Vincent

Support staff



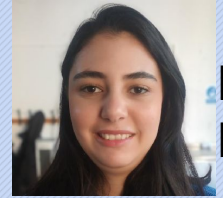
**Ms Slim:
Student
Teacher**



**Ms
Hassan**



**Ms
Djelloul**



**Ms
Mahsa**

Specialist teachers



Mr George: Music



Ms Isaac: Spanish



Mr McCann: PE

SEND support



**Miss Bourke:
SENDCo**



Class Representative Year 2

Your class rep. is: Nina

Contact number:
07930271546



The role of a class rep. communicates within the year group they are representing and share these with Miss Wittleton.

The class rep communicates with the class teacher and relevant members of the school gathering information or passing on information to parents and visa versa.



Rebuild Project & moving date

Summer 2024	Updates to planning submission to include a new forest school area
Autumn 2024	Planning decision is expected to take place at the September planning committee
Winter 2024	Works complete at Mund Street and preparation to move will begin
Early Spring 2025	Pupils and teachers prepare for the move to Mund Street
Late Spring 2025	Pupils move to Mund Street
Spring / Summer 2025	Construction starts at Avonmore with the demolition of existing building and preparing the site
Spring / Summer 2027	Construction completes on the school building at Avonmore and preparations begin for moving back
September 2027	Avonmore opens and pupils move in



Spring 2025 (changes highlighted)

School site:	<u>Avonmore Road</u>	
Term/Holiday	First Day	Last day
Spring 1 term	Tuesday 7 th January	Friday 14 th February
Spring half term break	Monday 17 th February	Friday 21 st February
Spring 2 term	Monday 24 th February	Friday 28th March 12pm

First day of Summer Term: Tuesday 22nd April



Rebuild Project & moving date

Further information on the new school proposals

The future of Avonmore Primary School

- **Email:** avonmore.renewal@lbhf.gov.uk
- **Visit:** www.lbhf.gov.uk/children-and-young-people/schools-and-colleges/primary-schools-are-fit-future/future-avonmore-primary-school



Further information on temporary arrangements

Avonmore Primary School

- **Email:** office@avonmoreprimary.co.uk
- **Phone:** 020 7603 9750
- **Visit:** <https://avonmoreprimary.co.uk>





Managing the move

- Gives us time to settle the new children and get the older children back into their routines and expectations around behaviour & learning
- Children will have opportunities to visit the Mund Street site before we move over
- PSHE lessons to discuss change and answer any questions or worries they might have
- We are working on arranging a play center/BOOM sports for the week we break up- while the staff are packing up & moving
- Details about the 'Walking Bus' will be sent closer to the time



Mund Street

First day of Summer Term: Tuesday 22nd April



New landscaping and planting areas at Mund Street



- newly decorated throughout the entire building, including the dining hall
- new classroom layouts upgrading the learning environment for students and teachers
- improved play and sports facilities, including new soft play surface
- new growing area and on-site forest school, renovated multi-use games area, resurfaced external surfaces and seating under the trees
- updating technology for learning
- new toilets, and
- improved fencing, gates, doors and installation of modern security systems.



Support us in keeping our enrichment offer

Fox Federation

Avonmore is a very special school. Recognised as being 'Outstanding' for so many reasons (in all areas!).

Part of the reason we are so special is because we offer our pupils SO MUCH more than the National Curriculum says we need to because we know the positive impact on learning and development that all this has.





What is 'the Avonmore offer'?

- Specialist teachers for PE, Dance, MfL & Music
- High adult:Child ratios across classes
- Attendance prizes for winning class each term e.g Pizza Express
- House Party event for winning House each term
- Cinema Trips in Autumn term
- West London Zone - targeted support for up to 48 children across school to access a range of projects
- Free lunches for every Nursery Child (this is not provided by the Mayor of London)
- A Federation Special Needs Expert Teacher to support our class teachers and teaching assistants in supporting our pupils with special needs
- Whole class instrumental lessons for every pupil
- Subsidised trips and Y5 & Y6 school journey so every pupil can attend



Phase A & B:

Big Foot production for World Book week

Phase C:

Jazz Project annually - either for BHM, EoY celebration or Christmas
World Book Week Project - author visits/speakers





Typically a Y2 class would benefit from

Kidzania

Cinema Trip

Science Museum

London Zoo

Neasden Temple

Matilda

Science show

Barbican Centre

London Sevashram Sangha Temple

Suggested contribution from
parents/carers: **£60**



Support us in keeping our enrichment offer

We are facing more and more challenges to our funding and budgets which means this is getting harder to do every year.

Ways to Support the School

Volunteering

Volunteering is a lovely way to support our community. Do you have a skill that you could share, for example- some parents help us by joining the class on school trips, some donate their time to become Class Reps or join the ASA (Avonmore School Association), others film assemblies or take group photos.

Regular donations

Some parents like to support us by setting up a regular donation amount of £10, £20 or £50 per term to support us in meeting the cost of all the opportunities we provide the children.

You can also donate a one off amount at any time through school gateway.



Support us while you shop

Easy Fundraising

You can support Avonmore by making a voluntary donation to the Avonmore School Association Charity as well as signing up to 'easy fundraising'. All Money raised will be used to subsidise trips, fund resources and for the enrichment activities to benefit all of the children.

If you would like to make a direct donation to the Avonmore School Association Charity, please do so via School Gateway through the payment section- AVONMORE PRIMARY SCHOOL DONATIONS.

Easy Fundraising is a fantastic website that allows you to fundraise for the school through your everyday shopping activities. It partners with thousands of brands who will donate part of what you spend to a cause of your choice and doesn't cost you any extra, the extra is covered by the brand. Every time you shop online you could raise money for the school! Join today and help raise free donations for us!

<https://join.easyfundraising.org.uk/avonmore-school-association/9iowkb/c2s/JAWKzu1F/CE866/facebook/>.



Support Avonmore while you shop

When you buy any book from LoveReading or LoveReading4Kids, 25% of the cover price will be given to a school of your choice, such as us!

- Book prices are competitive with at least 10% off the Recommended Retail Price.
- After you've searched for the books you'd like to buy, at checkout, you'll be able to search for your school, by adding your school name or postcode, and you allocate that money to us. It will even tell you how much your purchase has donated to us!
- We can then spend our allocated funds on LoveReading4Kids to get more books in our classrooms and library.

You get great books, while we get funds for great books to encourage even more reading for pleasure in our children.

The websites have lots of recommendations, reviews and extracts which can support your child's love of reading.

www.lovereadings.co.uk

www.lovereadings4kids.co.uk





Avonmore School Association

 Fox Federation

Our trustee
John Belcher



ASA is our
School
Charity.

This fund is created through all of the fundraising we do within the school throughout the year as well as all of our wonderful donations. We use this during each year to fund new opportunities and enrichment activities.

During the 23/24 academic year we funded a wonderful music programme for our children to enjoy and learn from.

This year we plan to continue with all of our wonderful enrichment activities.

If you are interested in being a trustee, please contact the school office.



Changes to Key Stages/Phases

Phase	Year Group	Class Teacher	
A	Nursery Reception	Miss Driscoll Miss Bagge	Indoor & outdoor learning Forest School EYFS Curriculum
B	Year 1 (KS1) Year 2 (KS1) Year 3 (KS2)	Miss Brabben Miss Vincent Mr Charlesworth	Afternoon playtime Assessments in class
C	Year 4 Year 5 Year 6	Mr Joseph Ms Henman Miss Vanderpump	More prepared for secondary school Home Learning & uniform expectations Ambassador & pupil leader roles Assessments set up to prepare them from SATs and secondary



Welcome new parents and carers!

New starters coffee morning for parents and carers of any pupil who has just joined Avonmore.

18th September 8.45-9.15

Come along to our informal coffee morning to meet parents to meet our Deputy Head Anna Waddell, class reps, learn more about the school and ask any questions you might have. Tea, coffee and treats provided.

School lunches

We fund free school lunches for every child in our nursery class.

The local authority funds school lunches for every child who is entitled to Free School meals.

The London Mayor is funding every other pupil for one academic year.

We really encourage everyone to eat at school.



The School Day- Phase B

Monday- Thursday Y1, Y2 & Y3 (Phase B)	
Gate 8.35-8.45	
8.35-8.50	Soft start & Handwriting
8.50-9.20	30 min lesson
9.20-10.20	60 min lesson
10.20-10.35	Break 1
10.35-11.45	70 min lesson
11.45-12.30	Lunch time
12.30- 1.00	30 min lesson
1.00-2.00	60 min lesson
2.00-2.15	Break 2
2.15-3.15	60 min lesson
3.15-3.30	15 min end of day routine

Friday Y1, Y2 & Y3 (Phase B)	
Gate 8.35-8.45	
8.35-8.50	Soft start & Handwriting
8.50-9.20	30 min lesson
9.20-10.20	60 min lesson
10.20-10.35	Break 1
10.35-11.45	70 min lesson
11.45-12.30	Lunch time
12.30- 1.20	50 min lesson
1.25-2.10	Assembly
2.15	End of day

- Y1&2 changing for PE to increase independence
- Afternoon playtime to allow for more play (growing body of research says this is important)
- Longer middle session allows for full lesson
- More space for reading across each day



Class Timetable

Y2 Timetable – Autumn 1					
Time	Monday	Tuesday	Wednesday	Thursday	Friday
8.35- 8.50	Handwriting	Handwriting	Handwriting	Handwriting	Handwriting
8.50 - 9.20	ELS Phonics	ELS Phonics	ELS Phonics	ELS Phonics	ELS Phonics
9.20 – 10:20	Maths	Maths	English	Maths	Maths
10.20 – 10:35	Break	Break	Break	Break	Break
10:35 – 11:45	English	English	PE	English	English
11.45 - 12.30	Lunch	Lunch	Lunch	Lunch	Lunch
12:30 – 13:00	Grammar	Mastering Number	Guided reading	Guided reading	Guided reading
13:00 – 14:00	Science	History/Geography	Maths	Spanish 1- 1:30	13:00 – 13:20 Mastering Number
				Music 1:30- 2	1:30 – 2:15 Assembly
14:00 –14:15	Break	Break	Break	Break	
2:15 – 3:00	PSHE	Art/DT	RE	Dance	
3 – 3:30	Phase Assembly		Mastering Number		

Routines- Phase A & Phase B

- Bring reusable water bottle and reading book every day
- Home Learning - weekly phonics, maths and reading books.
- Children come to school wearing school uniform **EVERY** day. Children will change for PE on **Wednesdays and Thursdays**.

Before and after the school day

- Children can arrive for breakfast club at **7.50am**
- Please sign up for after school clubs via boom sports website.
- Liaise with the office and class teacher if there is a change in adult collecting your child



Lunch and Snacks

In EYFS and KS1, a piece of fruit is given at morning break.

Please send your child to school with a small, healthy snack for first break.

No nuts or nut products please.



Reusable water bottles are to be brought into the classroom every day (**labelled please**). Single use water bottles will be recycled and not reused so please invest in a reusable bottle.

Please inform us if your child has any allergies or takes any medication.



Lunch Menu

WEEK 1	Monday	Tuesday	Wednesday	Thursday	Friday
	Homemade soup, bread, fresh green salad and seasonal fruits available daily				
Meat/ Fish Main Course	Jacket Potatoes Tuna Mayonnaise Grated Cheddar	Meatballs with herb and tomato sauce (G)	Minced beef stew	Chicken Teriyaki (Soya) (G)	Fish n Chips (F)
Vegetarian Main Course	Cheese (F) (D)	Plant-based balls with herb and tomato sauce	Vegan Goulash	Katsu Curry with mixed vegetable (G)	Falafel with orange & avocado sauce
Carbohydrates	Baked Beans	Spaghetti (G)	Mashed Potatoes	Mixed brown & white rice	Chips
Vegetables		Broccoli	Steam Green Beans and Carrots		Mushy Peas Baked Beans
Salad	Roasted vegetable and Couscous salad	Mango and Cucumber salad	Fennel and Tomato salad	Mozzarella tomato salad with pesto basil dressing (D)	Special Salad of the Week
Dessert	Fruit Yoghurt (D)	Fruit Yoghurt (D)	Sticky toffee pudding (E) (G) (D)	Fruit Jelly	Fruit Yoghurt (D)



Lunch Menu

WEEK 2	Monday	Tuesday	Wednesday	Thursday	Friday
Soup and bread	Homemade soup, bread, fresh green salad and seasonal fruits available daily				
Meat/ Fish Main Course	Creamy mushroom pasta (D) (G)	Chicken or Tuna wraps	Chicken curry	Roast chicken	Baked Salmon Fillet (F)
Vegetarian Main Course			Roasted pumpkin and plantain Dhansak	Vegetarian quesadilla with mint yoghurt (G)	Wholemeal Penne Pasta with Homemade Pesto (G)
Carbohydrates		Potato Wedges	Mixed brown & white rice	Baby potatoes	
Vegetables	Green beans	Sweetcorn	Roasted cauliflowers	Carrots, peas and cabbages	Broccoli
Salad	Greek salad (D)	Potato egg salad with chives with honey mustard dressing (E)	Roasted chick pea spinach salad	Vermicelli fresh salad (F)	Special Salad of the Week
Dessert	Fruit Yoghurt (D)	Mango sponge cake with homemade tangy syrup (D) (E) (G)	Fruit Yoghurt (D)	Cheddar Cheese & Crackers (D) (G)	Vanilla Ice cream (D)



Lunch Menu

WEEK 3	Monday	Tuesday	Wednesday	Thursday	Friday
Soup and bread	Homemade soup, bread, fresh green salad and seasonal fruits available daily				
Meat/ Fish Main Course	Mac n cheese (D) (G)	Chicken Pie	Spaghetti and tuna bolognaise	Chicken teriyaki (S) (G)	Fish fingers (F)
Vegetarian Main Course				Vegetable stir-fry with tofu (S)	Fishless Fingers (G) Courgette & Sweet Potato Fritters (E) (G)
Carbohydrates		New Potatoes		Mixed brown & white rice	Chips
Vegetables	Sweetcorn	Mexican summer salad with cilantro lime dressing		Steamed green beans	Mushy Peas Baked Beans
Salad	Green apple salad		Roasted seasonal salad with boiled egg (E)	Soba salad with ginger soya dressing (S)	Special Salad of the Week
Dessert	Fruit Yoghurt (D)	Summer Fruit Crumble with Custard (D)	Fruit Yoghurt (D)	Fruit jelly	Fruit Yoghurt (D)



What we are learning this term

	Autumn 1
Reading	Banded phonics books and class books
English	Fruit Kebabs (writing instructions) 'Otherwise' (visual literacy narrative writing)
Maths	Place value – Numbers 10 to 100
Science	Uses of everyday materials

P.S.H.E	School Rules/behaviour expectations, Getting to know each other, International Week, Zones of Regulation Pupil Council Anti Racism
Humanities (History)	The Great Fire of London
RE	Worship: Hinduism
Art/DT	Drawing Food – Fruit Salad



Maths

Knowledge Organisers

- Facts that need to be learnt by the end of the year
- The concepts will be taught throughout the year
- All year groups will be available on the school website
- Check that your child also knows all facts within previous year groups

Number Bonds within Twenty				
11	12	13	14	15
0 11	0 12	0 13	0 14	0 15
1 10	1 11	1 12	1 13	1 14
2 9	2 10	2 11	2 12	2 13
3 8	3 9	3 10	3 11	3 12
4 7	4 8	4 9	4 10	4 11
5 6	5 7	5 8	5 9	5 10
	6 6	6 7	6 8	6 9
		7 7	7 8	7 9
				8 8

20	19	18	17	16
0 20	0 19	0 18	0 17	0 16
1 19	1 18	1 17	1 16	1 15
2 18	2 17	2 16	2 15	2 14
3 17	3 16	3 15	3 14	3 13
4 16	4 15	4 14	4 13	4 12
5 15	5 14	5 13	5 12	5 11
6 14	6 13	6 12	6 11	6 10
7 13	7 12	7 11	7 10	7 9
8 12	8 11	8 10	8 9	8 8
9 11	9 10	9 9		
10 10				

Numbers to 1000	
100	one hundred
200	two hundred
300	three hundred
400	four hundred
500	five hundred
600	six hundred
700	seven hundred
800	eight hundred
900	nine hundred
1000	one thousand

Multiplication and Division Language	
$3 \times 5 = 15$	factor/ multiplicand
$3 \times 5 = 15$	factor/ multiplier
$3 \times 5 = 15$	product
$21 \div 7 = 3$	dividend
$21 \div 7 = 3$	divisor
$21 \div 7 = 3$	quotient

Measurements	
centimetre (cm) in a metre (m)	100 cm = 1 m
pence (p) in a pound (£)	100p = £1

Halves	
22 11	
24 12	
26 13	
28 14	
30 15	
32 16	
34 17	
36 18	
38 19	
40 20	

Doubles	
11 22	
12 24	
13 26	
14 28	
15 30	
16 32	
17 34	
18 36	
19 38	
20 40	

Multiplication Tables						
x	2	4	3	5	10	
1	2	4	3	5	10	
2	4	8	6	10	20	
3	6	12	9	15	30	
4	8	16	12	20	40	
5	10	20	15	25	50	
6	12	24	18	30	60	
7	14	28	21	35	70	
8	16	32	24	40	80	
9	18	36	27	45	90	
10	20	40	30	50	100	
11	22	44	33	55	110	
12	24	48	36	60	120	

Turns	
Quarter Turn	
Three-quarter Turn	

Telling the Time	
quarter past	The minute hand points to three and the hour hand points past the hour.
quarter to	The minute hand points to nine and the hour hand points past the hour.

Place Value Columns				
	thousands	hundreds	tens	ones
numeral	1000	100	10	1

Symbols	
x	multiplied by
÷	divided by
<	is less than
>	is greater than
=	is equal to

Fractions	
$\frac{1}{2}$	one half
$\frac{1}{3}$	one third
$\frac{2}{3}$	two thirds
$\frac{1}{4}$	one quarter
$\frac{3}{4}$	three quarters
$\frac{1}{2} = \frac{2}{4}$	

Part Whole & Derived Facts		
	part + part = whole part + part = whole whole = part + part whole = part + part whole - part = part whole - part = part part = whole - part part = whole - part	$3 + 5 = 8$ $5 + 3 = 8$ $8 = 3 + 5$ $8 = 5 + 3$ $8 - 3 = 5$ $8 - 5 = 3$ $5 = 8 - 3$ $3 = 8 - 5$

2D Shapes	
Quadrilateral	Four straight sides Four vertices
Pentagon	Five straight sides Five vertices
Hexagon	Six straight sides Six vertices
Polygon	A closed shape with three or more straight sides
Regular Shape	A shape where all sides are equal and all angles are equal
Irregular Shape	A shape with sides or angles of different sizes
Has a line of symmetry	
Does not have a line of symmetry	

3D Shapes	
Square-based Pyramid	
Faces, Edges and Vertices	



Maths websites to support your child at home

- » <http://mathsathome.lgfl.org.uk/eyfs.html>
- » https://www.sumdog.com/user/sign_in
- » www.j2e.com/j2blast (KS2)
(use child's log in)
- » [Busy things](#)
(EYFS, KS1 & KS2)



History & Science knowledge organiser example

History: Year 2

Knowledge Organiser: The Great Fire of London

Key Vocabulary

chronological order	When events or objects are put in order of time.
historical period	An amount of time that is marked by a significant individual or event.
timeline	A line where important events are added in chronological order.
source	A person, document or object which can tell us information about a person or event.

Significant People

	Thomas Farriner A baker. His bakery on Pudding Lane was where the Great Fire of London started on the 2 nd September 1666.
	Samuel Pepys A member of parliament who is famous for the diary he kept in which he wrote about The Great Fire of London.
	King Charles II The king at the time of The Great Fire of London. His surname was Stuart which is why this is called the Stuart times.
	The Duke of York (King James II) The Duke of York (Who became King James II) ordered that houses be blown up with gunpowder to stop the fire spreading even further.



A painting of people fleeing the Great Fire of London.



Christopher Wren's plan to rebuild London.



St Paul's Cathedral



Monument to the Great Fire of London





Recommended Reading list

Year 2 Recommended Reading List

Typically, children in year 2 will be reading phonics books. Below are some books that they might be able to read with support or could be read to them.

Recommended fiction books

- 'The Twits' Roald Dahl
- 'Now we are Six' A.A. Milne
- 'The Enchanted Wood' Enid Blyton
- 'Cinnamon' Neil Gaiman
- 'The Storm Whale' – Benji Davies
- 'Grandad's Island' – Benji Davies
- 'War and Peas' – Michael Foreman
- 'Hamid's Story' – Andy Glynne and Tom Senior
- 'Hamid's Story' – Andy Glynne and Tom Senior
- 'This is our house' - Michael Rosen
- 'The pea and the princess' by Mini Grey

Recommended non-fiction books

- 'Lots: The Diversity of Life on Earth' - Nicola Davies
- Roger McGough: An Imaginary Menagerie
- I am Marie Curie – Brad Meltzer
- I am Amelia Earhart' – Brad Meltzer
- Bedtime stories for Rebel Girls

Recommended poetry books

- 'Pumpkin Grumpkin' – John Agard, Grace Nichols *
- 'The Puffin Book of Fantastic First Poems' - June Crebbin (ed) *
- 'The Owl and the Pussy-Cat' - Edward Lear, illustrated by Charlotte Voake *
- 'The Further Adventures of the Owl and the Pussy-Cat' – Julia Donaldson, illustrated by Charlotte Voake
- 'Mustard, Custard, Grumble Belly and Gravy' – Michael Rosen *
- 'Silly Verse for Kids' – Spike Milligan



Reading record tasks

Who is your least favourite character and why?

If this book had a different title, what would the title be?

What were the words and give me a synonym for them or an explanation?

What puzzles you about this book?

What questions would you like to ask the author?

Which character would you like to meet? What would you ask them?

What are the three most important things that have happened the last chapter?

Summarise what has happened in the last paragraph.

Summarise what has happened in the last page

Summarise what you read today.

Summarise what you have read so far. |

Have you read any words in the last few pages where you had to think about their meaning? What were the words and give me a synonym for them or an explanation?

What words have you read that you would like to steal for your literacy writing?



Home learning expectations

Maths

- Set weekly to start with
- Set to consolidate the week/day's learning
- Should take around 10-15 minutes to complete
- From Autumn 2, will be set daily
- Class teacher will track

Reading

- Daily reading for 15 minutes
- Children complete Reading Record entry every day
- Reading Eggs

Online Platforms

Duolingo, Learning Village, Sumdog



Text Selection

Below are two important links that we thought it would be helpful to share with you. They support parents/carers with text selection and can give recommendations for reading age.

[AR Bookfinder](#)

[How We Rate and Review: Books | Common Sense Media](#)

RENAISSANCE
Accelerated Reader Bookfinder™

United Kingdom & Ireland

Parent [Quick Search](#) [Advanced Search](#) [Collections](#)

AR BookBag™

malorie blackman Search

You can search for book titles based on authors, topics or titles of books. Just type what you want to search for in the blank field above and click **Search**. You will then be able to sort your search results, select book titles to add to your AR BookBag, print a list of your search results or start a new search.

Book Details [Back to Results](#) [Print](#) [« Previous Title](#) [Next Title »](#)

A Dangerous Game
Blackman, Malorie
AR Quiz No. 234311 EN

Although Sam has a long-term illness, he wants to lead a normal life. He is thrilled when his parents let him go on the school trip to the Scottish Highlands. Sam wants to prove he's just as strong as his friends but the trip turns out to be dangerous.

AR Quiz Availability:
Reading Practice

ATOS Book Level:	3.7
Interest Level:	Middle Years, Ages 9 to 13
AR Points:	2.0
Rating:	★★★★
Word Count:	12895
Fiction/Non-fiction	Fiction
Topic - Subtopic:	Adventure-Danger; Countries/Regions-Scotland; Dyslexia Friendly-Dyslexia Friendly; Health/Illness-Misc./Other; High Interest/Low Level-High Interest/Low Level (All);
Series:	

LY relates to lower years, MY middle years, MY+ and UY upper years. These relate to the following chronological ages:

Lower Years (LY) = ages 5-8

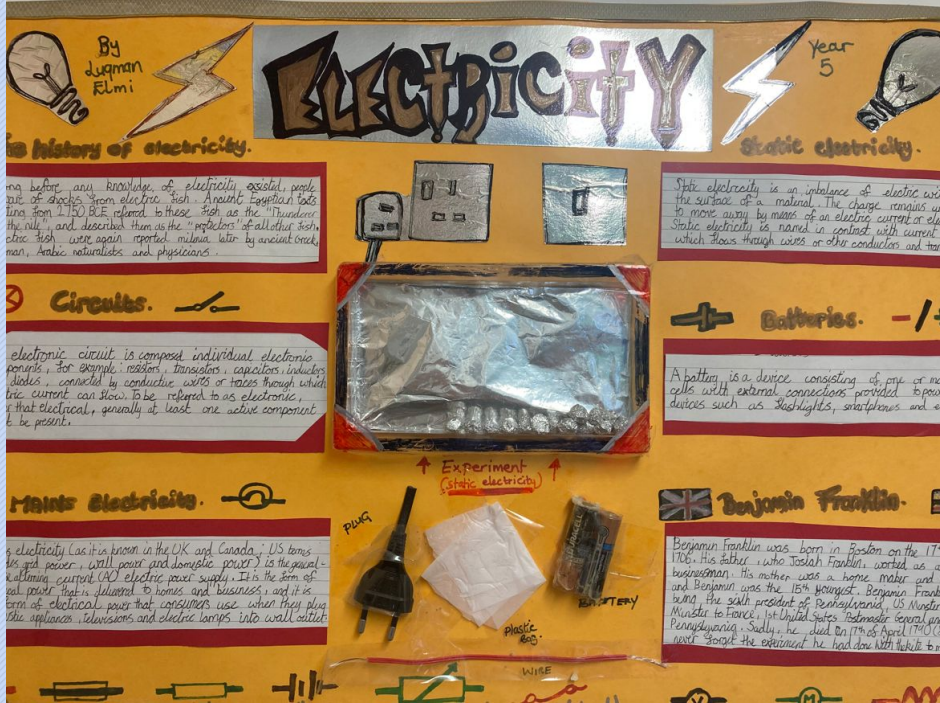
Middle Years (MY) = ages 9-13

Middle Years+ (MY+) = ages 12 and above

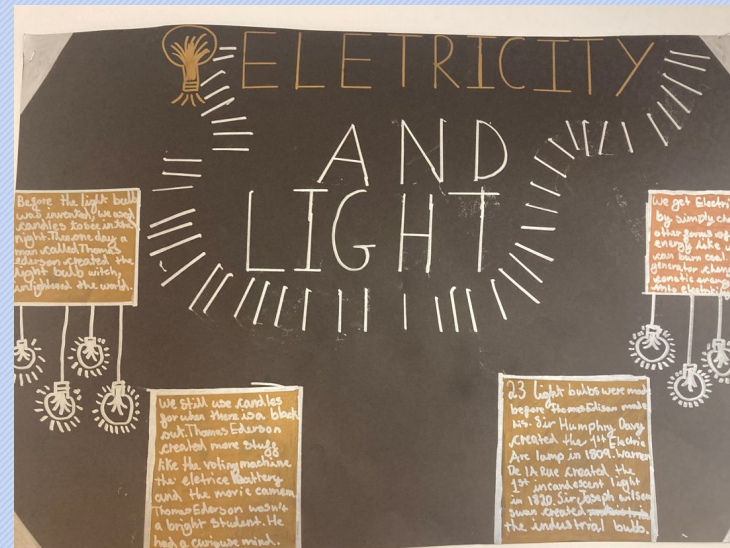
Upper Years (UY) = age 14 and above



Take home tasks



These link to our learning in school and we love celebrating the children's work



Coming up:

- International Day- presenting on their culture or one they have researched
- Black History Month
- After half term - WW2 week



Behaviour policy: Our Rules and Values

All children are expected to show our values

Collaboration

Curiosity

Inclusion

Resilience

Respect

Kindness



Supporting Children's Behaviour

We expect the highest standards of behavior at Avonmore to enable all children to feel safe and reach their potential.

At Avonmore, our behaviour policy has **been informed by much research** that supports the idea that children respond better to an approach focused on self-reflection and relationships.

We support children when they do not meet our behaviour expectations by scaffolding some reflection time in which an adult will ask them to think about who their actions are having a negative impact on and how they can make the situation better. We also prompt children to think about what they could do differently next time and reinforce a culture that 'mistakes are OK, as long as we learn from them'.

Change of terminology from updated DfE legislation means that internal suspensions are now known as **Reset & Reflect days**. All behaviour incidents continue to be recorded in the same way as previous years.



Supporting Children's Behaviour

We will communicate with parents and carers at the end of the school day if their child has had a difficult day with their behavior.

We use lots of reward systems such as star of the week, special mentions in assembly and house points.

Positive and nurturing relationships	Predictable routines	Discussing and teaching prosocial behaviour	Discussing and teaching values and rules
A calm and organised learning environment	Teaching regulation strategies (e.g mindfulness, movement & breathing)	Special Mentions	Whole class incentives and rewards



All Child

A full time link worker in school - **Will**

Cohort identification is taking place - children will be on the 1 year programme

Children outside of the cohort may still be involved in groups



General Reminders

- Up to date email address - Newsletter
- Any medical needs - please let the office know
- Photo permissions can be changed at the office at any time
- Please do call if your child is off due to sickness. We require evidence of sickness for more than 3 consecutive days.
- Holidays during term time are not authorised and may lead to fines from H&F Local Authority



Uniform update from October

Fox Federation



From October our school uniform supplier is changing to School Uniform Direct.

You will be able to buy the school Uniform online or in their store located on North End Road.

SUD provide the school with multi buy offers (that also work across secondary schools they also stock) and a No Uniform Wasted - all unopened/unused uniform can be taken back and swapped for larger size the following year.

The store will also be holding a Transition Day Sale that will include a 10% discount (details will be sent out closer to the time)





Uniform

The correct uniform must be worn daily with suitable, all-black school shoes.

The correct P.E. uniform must be worn to school on **Wednesdays** and **Thursdays**.

P.E kit:

- Avonmore white PE t-shirt,
- plain black shorts/ tracksuit bottoms,
- Avonmore black PE jacket
- suitable trainers

Everything must be clearly labelled.

Phase C:

Children who are not in the correct or full uniform will attend a playtime detention in-line with expectations at local secondary schools.



Home-school communication

- Parent consultations - *week starting 21st October*
- 2 reports annually (mid-year and end of year)
- Support given through Parent Workshops in Autumn Term
- Weekly newsletters
- School website
- Class teacher email address (y2@avonmoreprimary.co.uk)



E-safety reminder

Under 13 <i>(with Parental Consent)</i>	13 +	16 +	18 + <i>(13 with parental permission)</i>
Path	Facebook	WhatsApp	You Tube
Roblox	My Space		Play Store
	Twitter		We Chat
	Instagram		Kik
	Pinterest		Keek
	Google+		FourSquare
	Tumblr		Flickr
	Reddit		Musical.ly
	Snapchat		Live.ly
	LinkedIn		Omegle
		17 +	
		Vine	
		Whisper	
		18 +	
		Tinder	
		Yik Yak	

Age Restrictions for Social Media Platforms

What are the minimum ages for **account holders** on these social media sites and apps?

(As of March 2017 from the NSPCC website)



**common
sense
media**



Key Autumn Term Dates

Parent Workshops:

New Parents Welcome Coffee Morning: 18th September

Parents' evenings: week beginning 21st October

Black History Month celebration: October 2024



International Afternoon



As a school we are very proud of the diversity we have within our pupil base. Every year we hold an International Afternoon to celebrate.



Our wonderful families donate food from around the world, the children complete wonderful projects on nations of their choice, as well as being an amazing way of fundraising for the school.





We are really looking forward
to the upcoming year with your
child!

If you have any queries, please do
not hesitate to ask.